

BEKA MAX

PICO – 12/24V

With Integrated S-EP 4 Control

Technology
You can
Rely on!



Integrated electronic control unit - type: PICO S-EP 4

The S-EP 4 control unit is used for the time-dependant control of a central lubrication unit both for progressive systems and multiple-line systems.

Function process

After activation, the green LED is visible for approximately 1.5 seconds and signals that it is ready for operation.

If you wish to do a function test, you must activate an interim lubrication using the push button on the motor housing or in the control panel. The lubrication time is started by pressing the button on the panel or on the pump motor housing. The pump motor is turned off after the lubrication time has ended and the cycle time begins. All other lubrications are initiated automatically within the rhythm of the cycle time set.

If the ignition is shut off during this cycle or lubrication process, the time is stopped and stored. When the ignition is again turned on, the data are read from the memory and the function process is resumed at the point where it was interrupted.

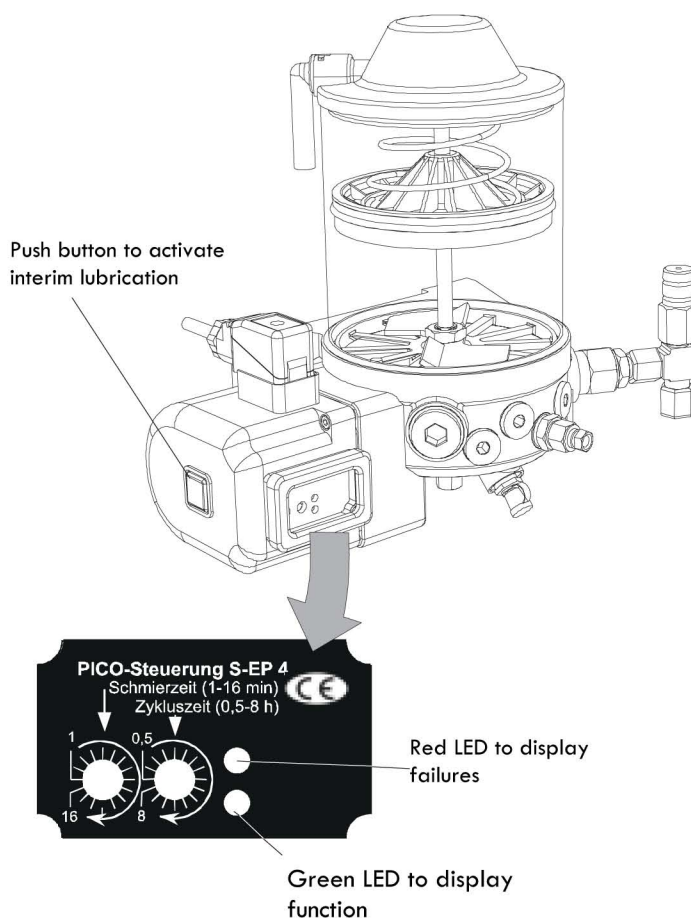
An interim lubrication can be done at any time by pressing the push button on the motor housing or on the control panel (optional).

The lubrication process begins each time the control unit is first connected.

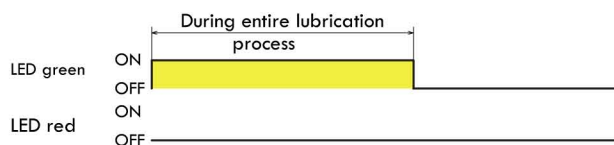
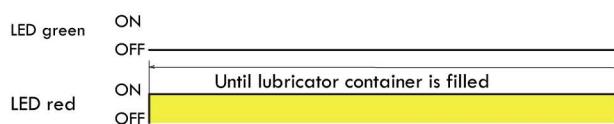
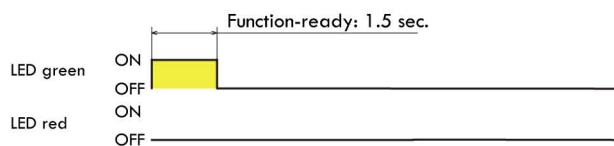
Regardless of the program settings, the green LED or the green signal light (optional) is visible in the cabin for 1.5 seconds when the ignition is started and indicates that the control unit is function-ready (activation control).

The PICO-tronic S-EP 4 has an integrated grease level control. If the minimum grease level is not reached, the pump shuts off automatically and the red LED appears until the lubricant container is filled up.

During lubrication, the green LED appears.

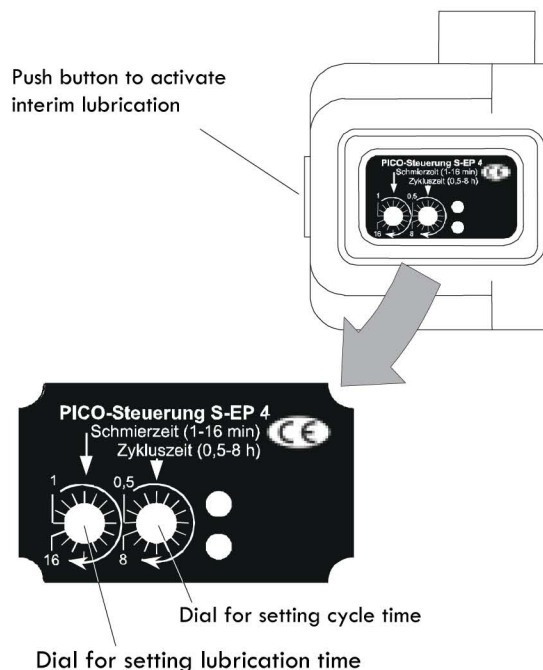


Function-ready display



The cycle time and the lubrication time can be set for time-dependant control of the central lubrication unit. The cycle time is the time period from the beginning of the lubrication process to the beginning of another lubrication.

Diagram of a cycle process:

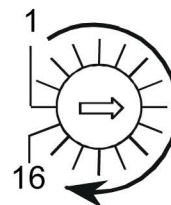


Lubrication time:

The lubrication time can be set within two time ranges:

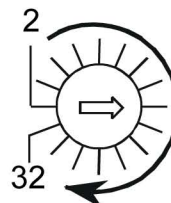
Time range I: 1 to 16 min.

Lubrication time setting – time range I
 (16 notches each 1 min)



Lubrication time setting – time range II
 (16 notches each 2 sec.)

Time range II: 2 to 32 sec.



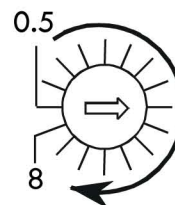
Cycle Time

Cycle time: 0.5 to 8 hours

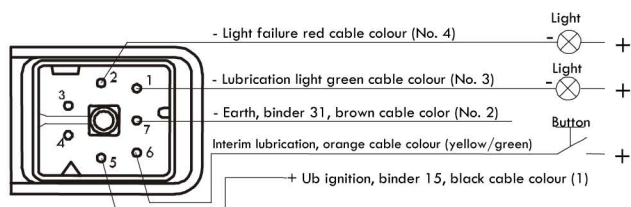
To set the time remove the red frame on the pump motor protective housing with a flat screwdriver, unscrew the four recessed head screws and remove the transparent protective cover. The cycle or lubrication time can be set with a flat screwdriver.

If the cover is not properly locked, water can get into the control unit and it can be destroyed. The warranty becomes invalid in this case.

Setting the cycle time
 (16 notches 0.5 hr)



Connection plan:



(...) = Cable No. of single-colour cables

Order key:

Sample order:

Model No. **2185 . 1 . 1 . 1 . 2 . Z . 0000**

Motor voltage	12 V	24 V
Number	1	2

Pump elements	Outlet position			
	1	2	4+10 without	
PE-120 F	1	2	3	0
PE-120 FV	4	5	6	
PE-120 F +	X		7	
PE-120 FV		X		
PE-120 F +		X	8	
PE-120 FV	X			

Container size	1,2 kg
Number	1

Control	with
Number	2

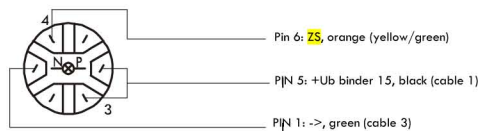
Cycle time	0,5 h - 8 h	0,5 h - 8 h
Lubrication time	1 min. - 16 min.	2 sec. - 32 sec.
Number	Z	W

Special design **0000**

Order numbers for PICO-tronic Integrated Control System S-EP 4 incl. protective motor cover:

Order No.	Lubrication time	Cycle time
2185G0003W	2 sec. - 32 sec.	0,5 h - 8 h
2158G0003Z	1 min. - 16 min.	0,5 h - 8 h

Luminous push button key connection:



(...) = Cable No. of single-colour cables

Note: Pump elements PE-5 or 10/15/25/50 must be ordered separately.