

INTERLUBE

Leaders in Lubrication Solutions



AX RANGE Centralised Lubrication System Multi-Industry Applications



Interlube Systems Ltd - maximising industrial performance world-wide...

AX RANGE ELECTRICALLY OPERATED MULTI-LINE SYSTEM

The automatic multi-line AX Range provides centralised lubrication at a fraction of the cost of conventional grease systems. They are constructed of waterproof and corrosion resistant materials, making them ideal for all types of industry and can be used on applications with up to 60 points where a multi-line system can be installed.

The AX Range are of self contained, automatic, electrically driven pump units, available with a maximum of 60 outlets in a choice of 110 or 240 volt rating. Larger models for special applications can also be supplied.

Integral pumping units deliver a precise volume of lubricant to each bearing feed line and in the event of accidental damage to one line the remaining lines are unaffected.



A geared synchronous motor connected to a camshaft mechanically activates a series of pumping units. A rotating impeller within the reservoir ensures an even flow of lubricant to these units. An integral PCB controls the delay period(s) and then initiates a complete revolution of the cam, thereby completing one lubrication cycle.

The AX System does not require external controls and is therefore simple to install and maintain, making AX ideal for industrial applications.

PUMPING UNITS

TECHNICAL DATA

Positive displacement pumping units are available in six different stroke outputs to cater for varying size bearings.

They are supplied complete with outlet fittings suitable for 4mm tubing.

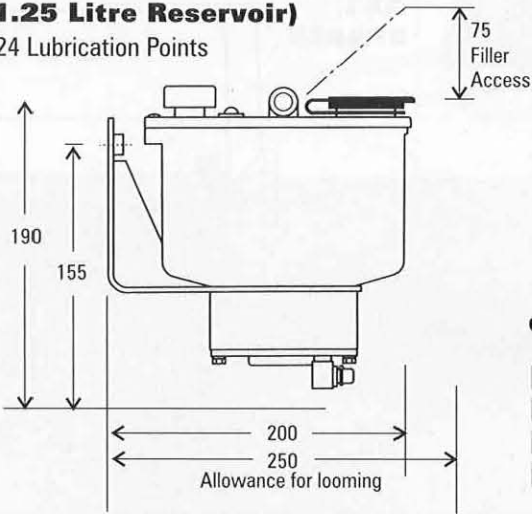
Colour code	Stroke Output (cc)	Part No.
Red	0.010	78033
Green	0.015	78034
Orange	0.025	78035
Blue	0.040	78036
Silver	0.060	78037
Black	0.100	78038
Blanking Plug (for unused outlets)		34237-402

PUMP TYPE	RECOMMENDED LUBRICANTS					
	OILS SAE 80/90	NLGI GREASES				
		000 Fluid	00 Semi Fluid	0 Soft	1 Stiff	2 Hard
AX1111 12Points	-40°C	-35°C	-30°C	-25°C	-20°C	-15°C
AX1121 12Points	-40°C	-35°C	-30°C	-25°C	-20°C	-15°C
AX2XX1 12Points	-40°C	-35°C	-30°C	-25°C	-20°C	-15°C
AX2XX2 24Points	-30°C	-25°C	-20°C	-15°C	-10°C	-5°C
AX2XX3 36Points	-20°C	-15°C	-	-	-	-
AX3 upto 60 points	-25°C	-25°C	-25°C	-25°C	-25°C	-25°C
Upper Temp Limit	+40°C for all pumps					

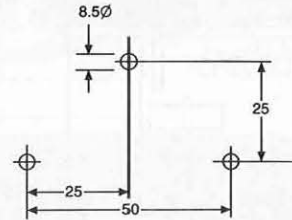
AX RANGE TECHNICAL DATA

AX1 (1.25 Litre Reservoir)

Maximum 24 Lubrication Points



AX1 - PUMP MOUNTING CENTRES



Ordering Method AX1 X X X

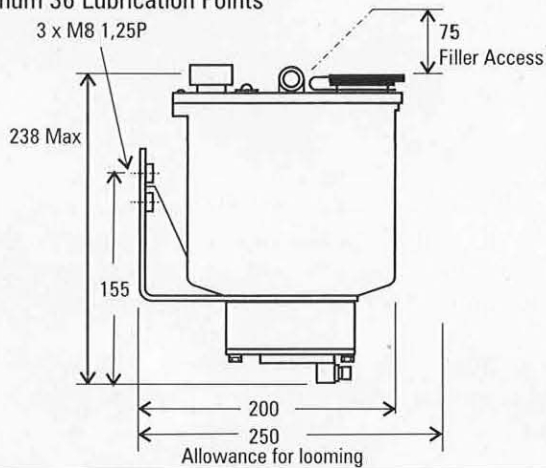
1	6 Mins	1	110V 50/60 Hz	1	12 POINTS
2	15 Mins	2	240V 50/60 Hz.	2	24 POINTS
3	30 Mins			3	36 POINTS*
4	60 Mins				

Cycle Time = (minutes per rev)
*Suitable for oil and fluid grades up to '000' grade only

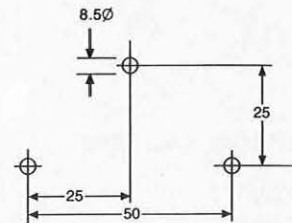
AX2 (2 litre Reservoir)

Maximum 36 Lubrication Points

3 x M8 1,25P



AX2 - PUMP MOUNTING CENTRES



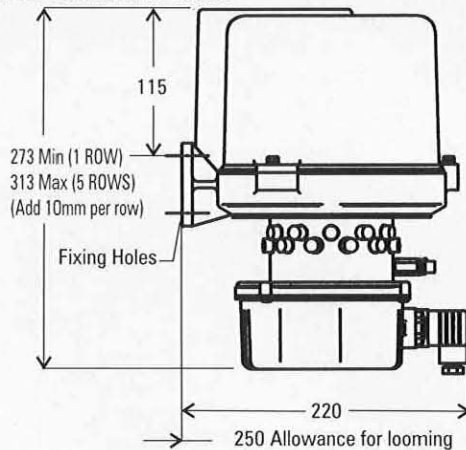
Ordering Method AX2 X X X

1	6 Mins	1	110V.	1	12 POINTS
2	15 Mins	2	240V	2	24 POINTS
3	30 Mins			3	36 POINTS*
4	60 Mins				

Cycle Time = (minutes per rev)
*Suitable for oil and fluid grades up to '000' grade only

AX3 (3 Litre Reservoir)

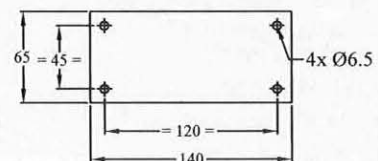
Maximum 60 Lubrication Points



Ordering Method AX3 X X X

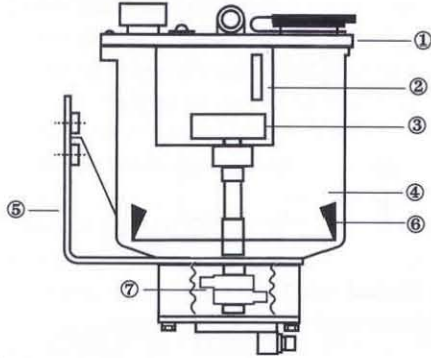
0	Continuous	1	110V	1	12 POINTS
1	3 Minute delay	2	240V	2	24 POINTS
2	7 Minute delay			3	36 POINTS
3	10 Minute delay			4	48 POINTS
4	20 Minute delay			5	60 POINTS
5	30 Minute delay				
6	45 Minute delay				
7	60 Minute delay				
8	90 Minute delay				
9	120 Minute delay				

AX3 - PUMP MOUNTING CENTRES



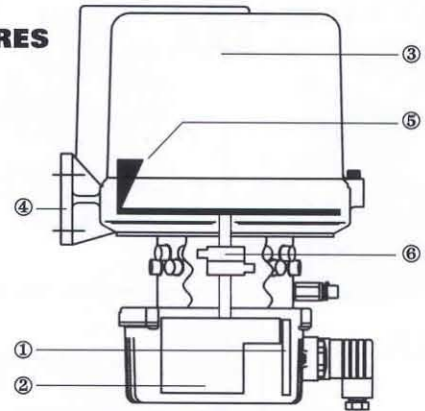
SPARES REFERENCE

AX1 & AX2 SPARES



ITEM	AX1	AX2
1. LID ASSY	AX/SP1	AX/SP1
2. PCB ASSY	AX/SP2	AX/SP2
3. ELECTRIC MOTOR	AX/SP8/110v AX/SP8/240v	AX/SP8/110v AX/SP8/240v
4. RESERVOIR	AX/SP4	AX/SP9
5. BRACKET	83341-803	83341-803
6. PADDLE ASSY	AX/SP7	AX/SP7
7. CAMSHAFT ASSY	12 UNIT 24 UNIT 36 UNIT	AX/SP5/1 AX/SP5/2 AX/SP5/3

AX3 SPARES



ITEM	SPARES REF NUMBER	
1. PCB ASSY	AX3/SP2	
2. ELECTRIC MOTOR	AX3/SP8/110v	AX3/SP8/240v
3. RESERVOIR	AX3/SP9	
4. BRACKET	38580-125	
5. PADDLE ASSY	AX3/SP7	
6. CAMSHAFT ASSY	12 UNIT	AX3/SP5/1
	24 UNIT	AX3/SP5/2
	36 UNIT	AX3/SP5/3
	48 UNIT	AX3/SP5/4
	60 UNIT	AX3/SP5/5

DISTRIBUTION SYSTEM

Each lubrication point is serviced by its own individual feed line, via a dedicated pumping unit. The system is capable of handling SAE 80/90 oil up to NLGI Grade 2 grease with a 24 unit pump and up to '000' Grade grease on a 36 unit pump with the AX1 and AX2. The AC3 is capable of handling SAE 80/90 oil up to NLGI Grade 2 grease up to 60 points. The feed lines are 4mm O/D semi rigid black nylon tube. UV stabilised, rated 140 bar (14 MN/m²).

Individual bearing lubrication on a multi-line system ensures that an accidental pipe breakage affects only one lubrication point, not the complete system.

INTERLUBE
Leaders in Lubrication Solutions

Interlube Systems Ltd
St Modwen Road, Parkway Industrial Estate
Plymouth, Devon, England PL6 8LH
Tel: +44 (0)1752 676000
Fax: +44 (0)1752 676001
e-mail: info@interlubesystems.com
Web Site: www.interlubesystems.com

QPC Quality Products Co. Inc.
AUTOMATED LUBRICATION SYSTEMS
Katy, Texas - 281-599-9300



www.interlubesystems.com

HELP DESK · PRODUCT RANGE · LITERATURE REQUEST

For advice on which product is most suitable for your needs - visit our web site from where you can e-mail us your requirements. Our Help Desk will respond within 24hrs by return e-mail or phone.

